


JANTZEN



SUMMER 2023

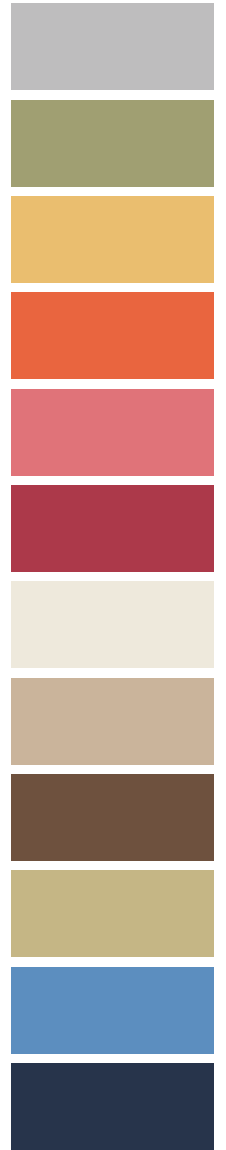
MOODBOARD + COLORS

WGSN

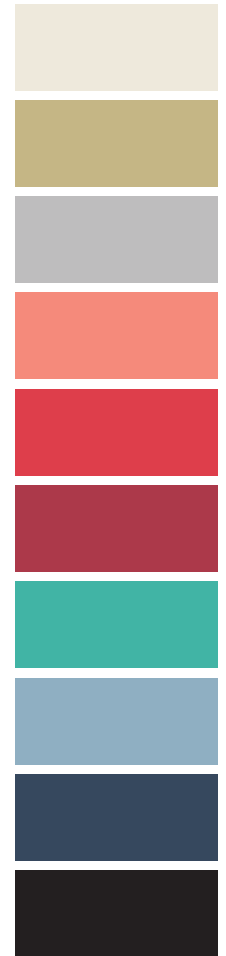
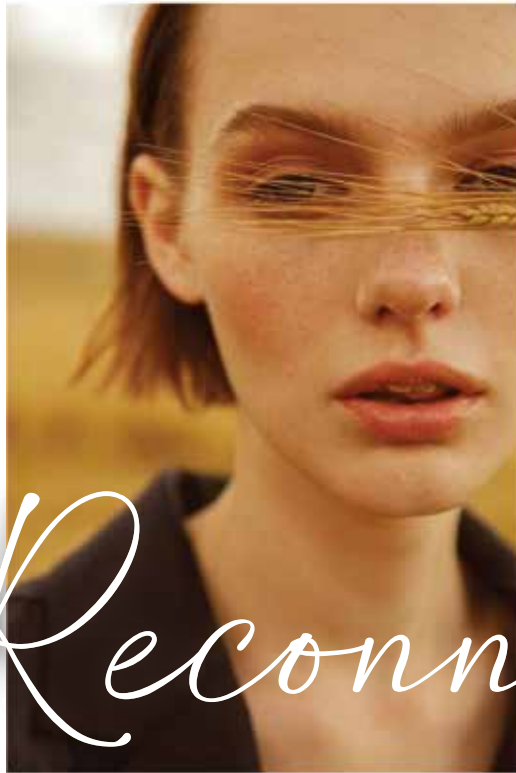
Swimwear Forecast S/S 23: Soul Space

The world still waking up and adjusting after a long period of restriction and uncertainty.

Soul Space invites the consumer to be part of this transition in a very slow and emotively way. It seeks inner calm and contentment through an exploration of the outside beauties that have been waiting for us to revisit. A universe full of organic wonders that will inspire the trend and color palette with natural tones, craft details and sun-faded themes.



MOODBOARD + COLORS



Lockdown is over! Is time to go out!

It's time to explore again all the nature and landscape that was out of our reach for far too long.

Its time to feel the breeze, smell the grass, admire the living creatures, dive in and reconnect.

Jantzen Summer 2023 invites women to dress up with nature inspired colors and prints, and to be part again of our fascinating planet.

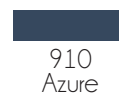
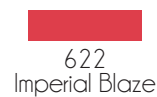
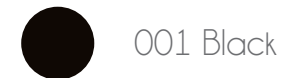
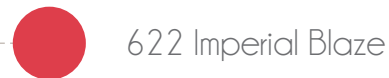
STORIES + COLOR FLOW

Garden Euphoria

Sunrise Blush

Neotropics

Natural Essence



NEW COLOR



622
Imperial Blaze



NEW VERSION OF
WATERMELON SS22



622
Imperial Blaze



315
Seafoam Tides



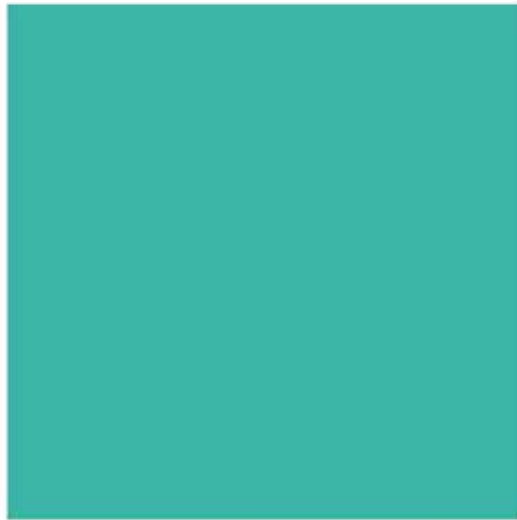
910
Azure



001
Black

*Bright &
Energetic*

NEW COLOR



PANTONE
Waterfall 15-5516
TCX

315
Seafoam
Tides



622
Imperial Blaze



315
Seafoam Tides



910
Azure

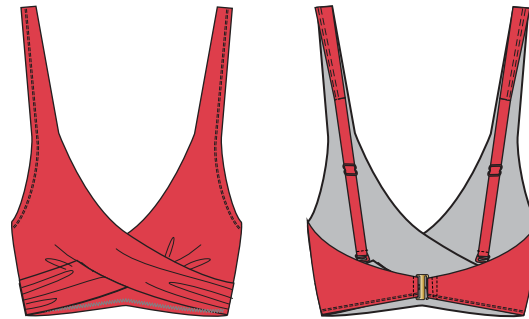


001
Black

*Fresh &
Summery*

BRAS

SIZE: 4-18
FABRIC: 84% POLYAMIDE 16% ELASTANE



JZ23158B
Vera Surplice Bra
Adjustable & convertible straps



- 622 Imperial Blaze
- 315 Seafoam Tides
- 910 Azure
- 001 Black



622
Imperial Blaze



315
Seafoam Tides



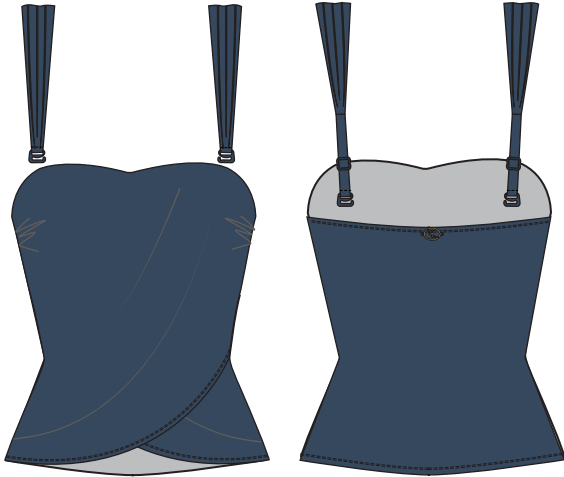
910
Azure



001
Black

TANKINI

SIZE: 4-18
FABRIC: 84% POLYAMIDE 16% ELASTANE



JZ23154T
Rita Drape Bandeaukini
Removable and adjustable straps

- 910 Azure
- 001 Black



JZ23155T
Louise Wrap Tankini
Adjustable straps

- 622 Imperial Blaze
- 315 Seafoam Tides
- 910 Azure
- 001 Black



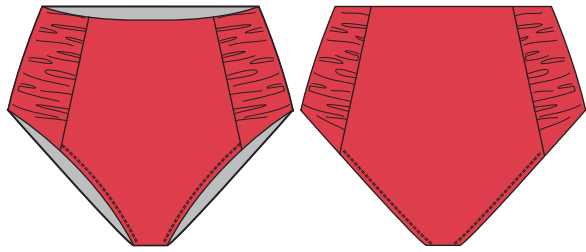
JZ23157T
Violet X-Back Tankini
Adjustable straps

- 910 Azure
- 001 Black



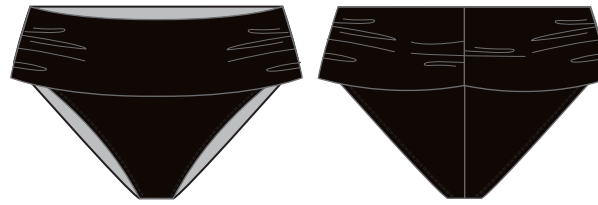
BOTTOMS

SIZE: 4-18
FABRIC: 84% POLYAMIDE 16% ELASTANE



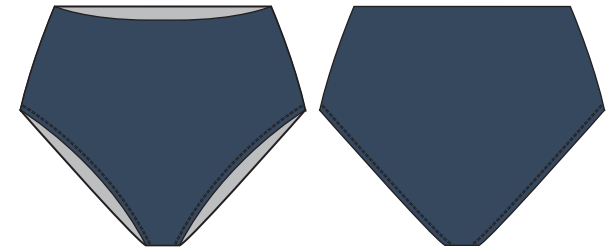
JZ23170H
Side Shirr Comfort Core Bottom

- 622 Imperial Blaze
- 315 Seafoam Tides
- 910 Azure
- 001 Black



JZ21001H
Foldover Hipster

- 910 Azure
- 001 Black



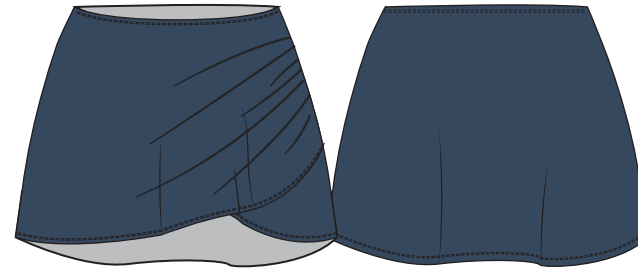
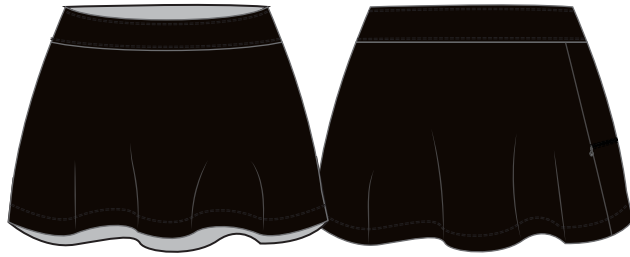
JZ23171H
Comfort Core Bottom

- 622 Imperial Blaze
- 315 Seafoam Tides
- 910 Azure
- 001 Black



BOTTOMS

SIZE: 4-18
FABRIC: 84% POLYAMIDE 16% ELASTANE



JZ21352H
Avery Skort with zipper

- 622 Imperial Blaze
- 910 Azure
- 001 Black



JZ22019C
Cover-Up Skirt

- 910 Azure
- 001 Black



622
Imperial Blaze



315
Seafoam Tides



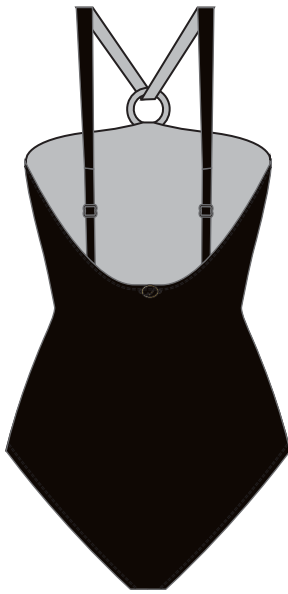
910
Azure



001
Black

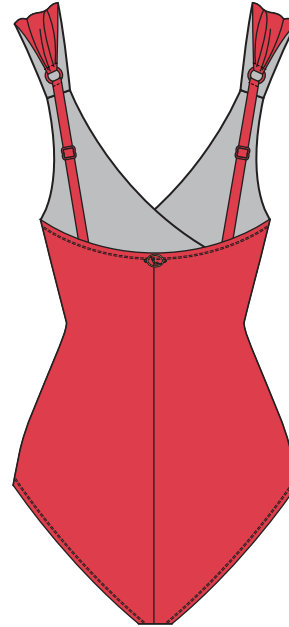
ONE PIECE

SIZE: 4-18
FABRIC: 84% POLYAMIDE 16% ELASTANE



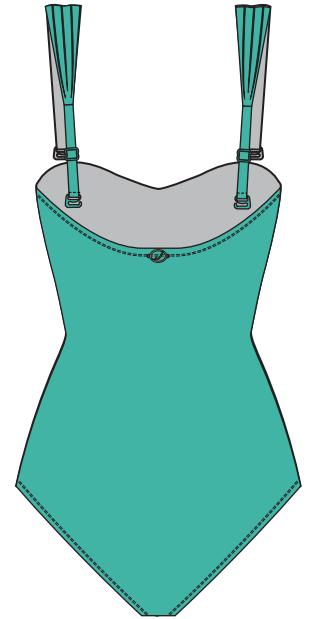
JZ23153M
Marion -1PC
Adjustable straps

- 910 Azure
- 001 Black



JZ21015M
Surplice Mio
Adjustable straps

- 622 Imperial Blaze
- 315 Seafoam Tides
- 910 Azure
- 001 Black



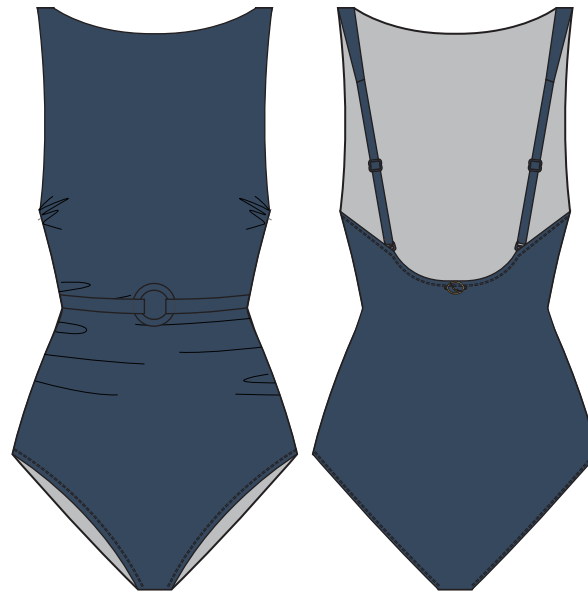
JZ23150M
Greta 1PC
Removable and adjustable straps

- 622 Imperial Blaze
- 315 Seafoam Tides
- 910 Azure
- 001 Black



ONE PIECE

SIZE: 4-18
FABRIC: 84% POLYAMIDE 16% ELASTANE



JZ23152M
Yvonne High Neck 1PC
Adjustable & convertible
straps

- 910 Azure
- 001 Black



SCREEN PRINT



622
Imperial Blaze

*Garden
Euphoria*

SIZE: 4-18
FABRIC: 84% POLYAMIDE 16% ELASTANE

Contrasted fabrics



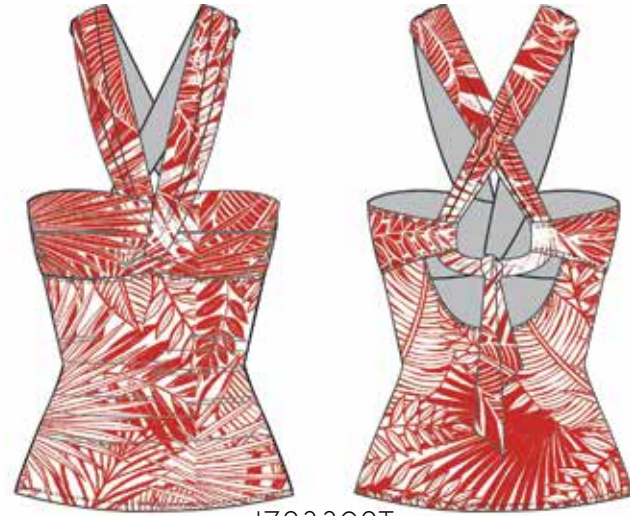
JZ23300B
Sophia Bra
Adjustable & convertible
straps



JZ23301H
Linda Front Tie Core Bottom



★ NEW STYLE ★



JZ23302T
Esther Bandeaukini
Adjustable straps



JZ23171H
Comfort Core Bottom



622
Imperial Blaze

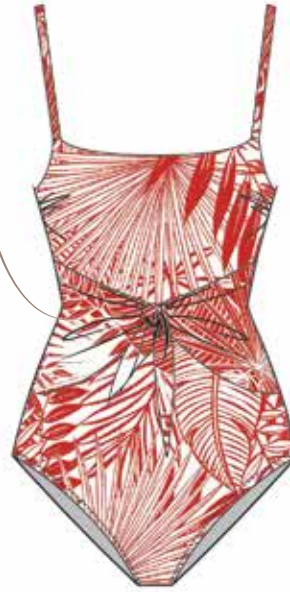
★ NEW STYLE ★

SIZE: 4-18
FABRIC: 84% POLYAMIDE 16% ELASTANE

Contrasted fabrics



Functional tie-on



Ring with a hook



FUNCTIONAL WRAPPING PIECE

JZ23304M
Ava Front Tie 1PC
Adjustable straps



JZ23305M
Marlene 1PC
Adjustable straps with racerback hook



622
Imperial Blaze

★ NEW STYLE ★

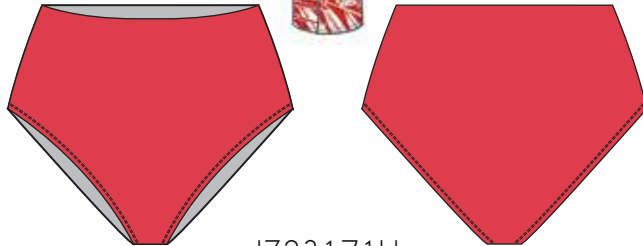
SIZE: 4-18
FABRIC: 84% POLYAMIDE 16% ELASTANE



PLACEMENT
PRINT



JZ23306T
Rosie Rashguard



JZ23171H
Comfort Core Bottom

TC



JZ23307C
Josephine Pull On Pant Cover-up

SIZE: S-XL
FABRIC: 100% VISCOSE



622
Imperial Blaze

DIGITAL PRINT



315
Seafoam Tides

*Sunrise
Blush*

SIZE: 4-18
FABRIC: 84% POLYAMIDE 16% ELASTANE

★ NEW STYLE ★



JZ23310B
Goldi Midkini



JZ23312T
Audrey Drape Tankini
Adjustable straps



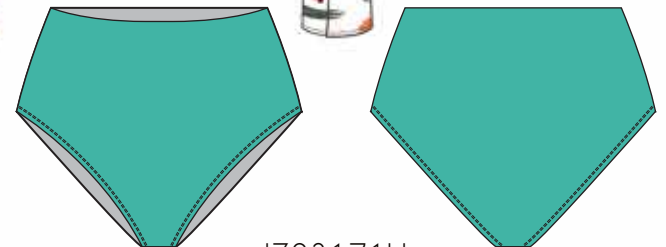
JZ23318T
Rosie Rashguard



JZ23311H
Side Shirr Comfort Core Bottom



JZ23313H
Foldover Hipster



JZ23171H
Comfort Core Bottom



315
Seafoam Tides

SI

R

TC

TC

TC

SIZE: 4-18
FABRIC: 84% POLYAMIDE 16% ELASTANE



JZ23315M
Surplice Mio
Adjustable straps



JZ23316M
Farrah High Neck 1PC
Back neck hook



JZ23314C
Cover-Up Skirt



315
Seafoam Tides

DIGITAL PRINT



315
Seafoam Tides

Neotropics

SIZE: 4-18
 FABRIC: 84% POLYAMIDE 16% ELASTANE



JZ23360B
 Vera Surplice Bra
 Adjustable & convertible straps



JZ23362T
 Bianca Drape Tankini
 Adjustable straps



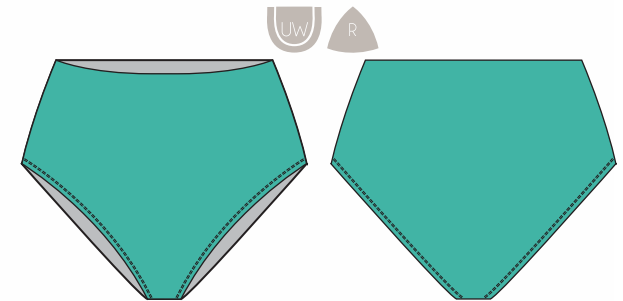
JZ23364T
 Louise Wrap Tankini
 Adjustable straps



JZ23361H
 Side Shirr Comfort Core Bottom



JZ23363H
 Foldover Hipster



JZ23171H
 Comfort Core Bottom



315
 Seafoam Tides



SIZE: 4-18
FABRIC: 84% POLYAMIDE 16% ELASTANE



JZ23365M
Surlice Mio
Adjustable straps



JZ23366M
Glamour Cap Sleeve 1 PC



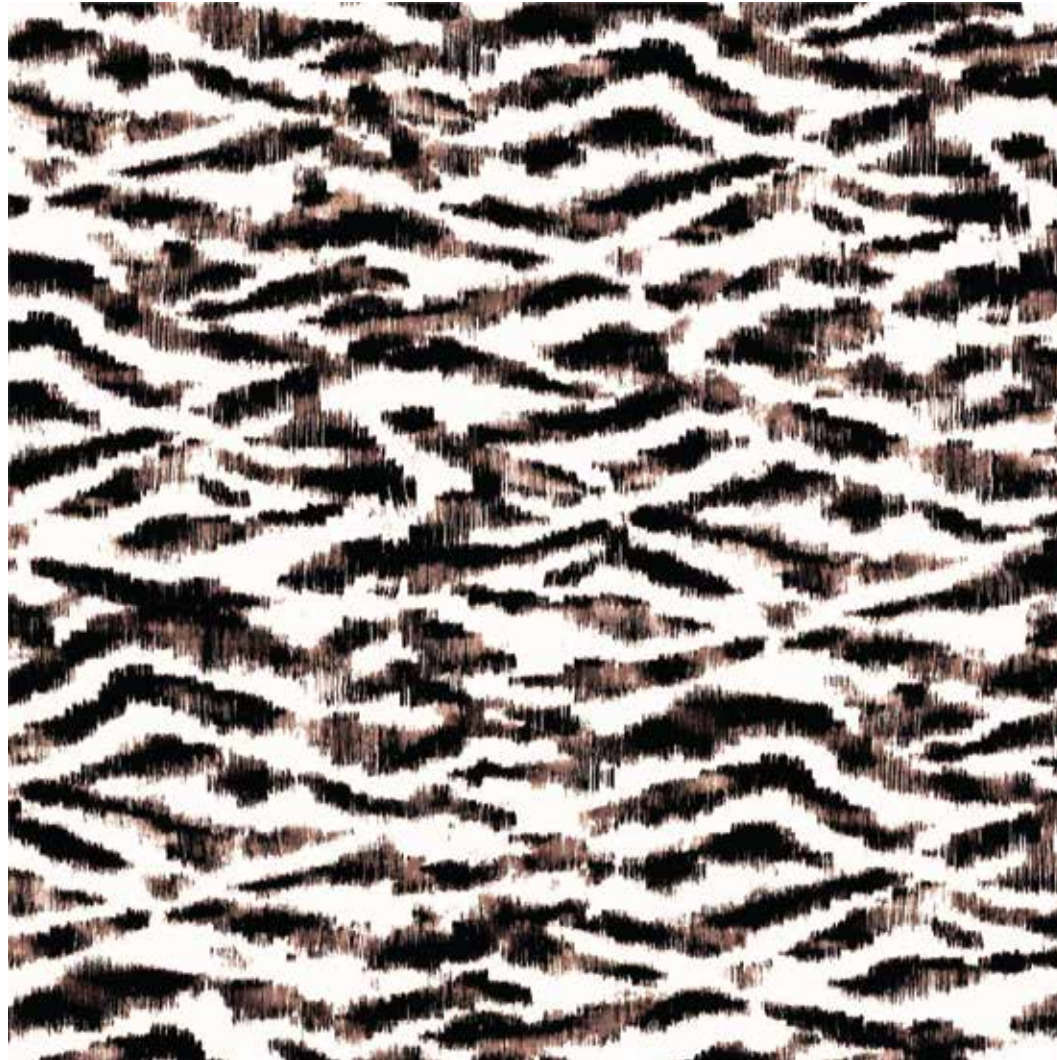
JZ23367C
Celia Tunic Cover-Up

SIZE: S-XL
FABRIC: 100% VISCOSE



315
Seafoam Tides

DIGITAL PRINT



001
Black

*Natural
Essence*

SIZE: 4-18
FABRIC: 84% POLYAMIDE 16% ELASTANE

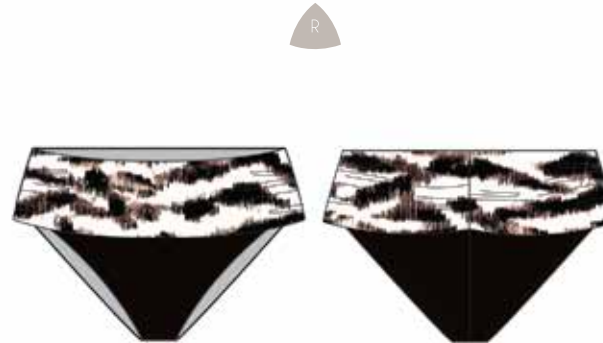


JZ23330B
Vera Surplice Bra
Adjustable & convertible straps

JZ23332T
Eden Cami Tankini
Adjustable straps



JZ23331H
Comfort Core Bottom



JZ23333H
Foldover Hipster

★ NEW STYLE ★



001
Black

SIZE: 4-18
FABRIC: 84% POLYAMIDE 16% ELASTANE



JZ23335M
Grace High Neck H-Back 1PC
Back Neck Closure



JZ23336M
Marion 1PC
Adjustable straps



JZ23337M
Surplice Mio
Adjustable straps



001
Black

HOW TO MEASURE

Please use a cloth tape measure
to take your measurements.

If you do not have a cloth tape measure,
use a string with a ruler.

BUST: Keeping the tape measure horizontal, place it around the body, under the arms and across the fullest part of the bust. Include the lower portion of the shoulder blades.

WAIST: Keeping the tape measure horizontal, place it around the body at the natural waistline; usually the smallest part of the waist.

HIPS: Keeping the tape measure horizontal, place it around the body at the fullest part of the hips; approximately 8" below the natural waistline.

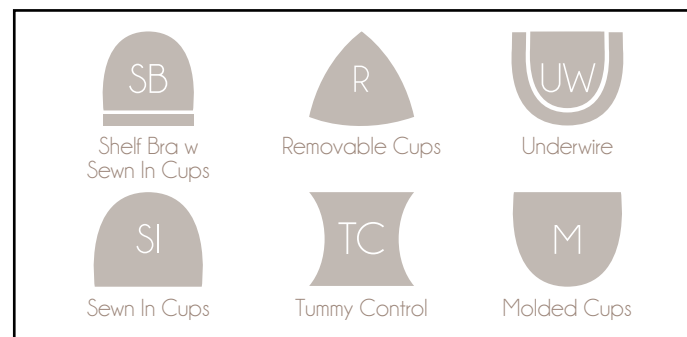
TORSO: Place the tape measure on the right shoulder midway between the neck base and the shoulder joint, down the back through the crotch and up over the fullest part of the bust to the starting point. Avoid constriction at the crotch.

Please note: the Torso measurement is especially important in determining the right size for a good fitting swimsuit. Interestingly, the torso length has little relationship to a woman's height. A tall woman could have a short torso and long legs and a short woman could have a long torso and short legs.

SIZE CHART

COVER-UPS	S	M	M	L	L	XL
SWIMSUITS	6	8	10	12	14	16
Bust	36	37	38	39.5	41	42.5
Waist	28	29	30	31.5	33	34.5
Hips	38.5	39.5	41	42.5	44	45.5
Torso	62	63.5	65	66.5	68	69.5

CONSTRUCTION ICONS



USA SALES

Ron Razzano

Vice President of Sales

cell: (949) 933-7946

ron.razzano@jantzenbrands.com

WEST COAST / HAWAII

TIKI SALES/Traci O'Neil-Math

705 Calle Amable
San Clemente, CA 92673

cell: (949) 280-4419
tracitikisales@gmail.com

FLORIDA/CARRIBBEAN

Lee Beavers

1211 Hamlet Avenue, Unit C
Clearwater, FL 33756

cell: 727-510-1645
office: 727-422-7946
fax: 727-361-9917
beaversleelb@gmail.com

NORTH EAST

EAST AVE SWIM/Ralph & Sam Muller

184 Forest Ave, Unit 204
Hawthorne, NJ 07506

cell Ralph: (201) 925-9501
cell Sam: (201) 925-9506
office: (201) 612-3148
fax: (201) 612-3148
eastaveswim@outlook.com

SOUTH ATLANTIC

Tom Perry

751 West Cheval Drive
Fort Mill, NC 29708

cell: (704) 491-6366
fax: (704) 495-6879
tperry1251@aol.com

MIDWEST

ELECTRIC SALES AGENCY/Kim Schneider

Highlight Center, 807 Broadway St NE, Suite 129
Minneapolis, MN 55413

cell: (507) 213-0731
Kim@electricsalesagency.com

SOUTHWEST

BOJO Sales/Laurel Jones

1020 W. 57th Terrace
Kansas City, MO 64113

cell: (913) 219-0999
bojosales@hotmail.com

INTERNATIONAL SALES

Jennifer Waycott

Vice President of Sales & Merchandising

cell: (661) 312-3235

jennifer.waycott@jantzenbrands.com

LATIN /CENTRAL AMERICA

Diana Mejia

Carrera 45 A # 66 A 154, Bodega 202

cell: (+57) 3136779127
foreigntrade@phax.com.co

CANADA / EUROPE

Marcela Ruda Meneses

Carrera 45 A # 66 A 154, Bodega 202

office: (+57) 4 6044673 Ext 2027
sales2@phax.com.co

COSTA RICA / COLOMBIA

Giuseppe Gaudenzi

Carrera 45 A # 66 A 154, Bodega 202

cell: 3192651926
office: (+57) 4 604 46 73 ext 2003
manager@phax.com.co