

A woman with long, wavy brown hair is lying on her side on a sandy beach. She is wearing a strapless, one-piece swimsuit with a vibrant floral pattern in shades of purple, pink, and yellow. Her right arm is raised, resting her head on her hand, and her left hand is propped up on the sand. The background shows the ocean with gentle waves and a clear blue sky. The overall mood is relaxed and summery.

COSITA LINDA®
BEACHWEAR



The Magic HOUR

The majestic wakening of the first hour of dawn. The resplendent enchantment of the sunset. Twice a day, the sky is flooded with golden light, bestowing an essence of wondrous splendor and eternal beauty on everything it touches. Shadows lengthen, colors intensify, and reflections in the water sparkle with stunning, luxurious light.

The Magic Hour transforms the mundane INTO DREAMS, infusing the everyday with a dramatic and theatrical energy.





Sunrise

At dawn, we walk along the paths full of flowers, which begin to open and intensify, inspiring and readying our minds *for a magical day ahead.*





CL23200B
Triangle Top
With Ruffles.
Ecco Fabric.
505 - Orchid Smoke
S • M • L • XL

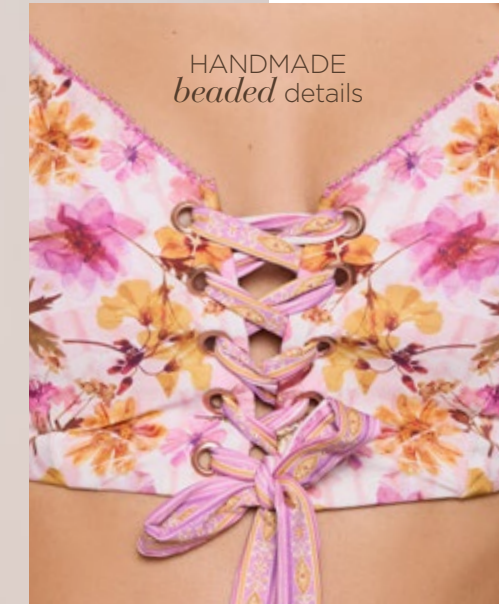
CL23224H
Ruffle Tie Side
Bottom (Cheeky Fit).
Ecco Fabric.
505 - Orchid Smoke
S • M • L • XL

CL23201H
Ruffle Tie Side
Bottom (American Fit).
Ecco Fabric.
505 - Orchid Smoke
S • M • L • XL



CL23202B
Tie Front Top.
Ecco Fabric.
505 - Orchid Smoke
S • M • L • XL

CL23203H
Tie Side Hipster.
(Moderate Fit).
Ecco Fabric.
505 - Orchid Smoke
S • M • L • XL

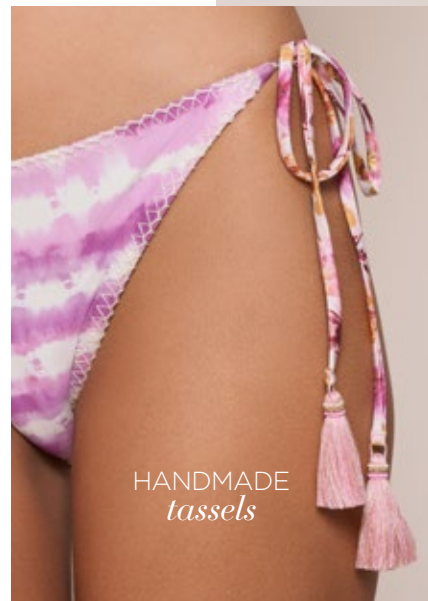
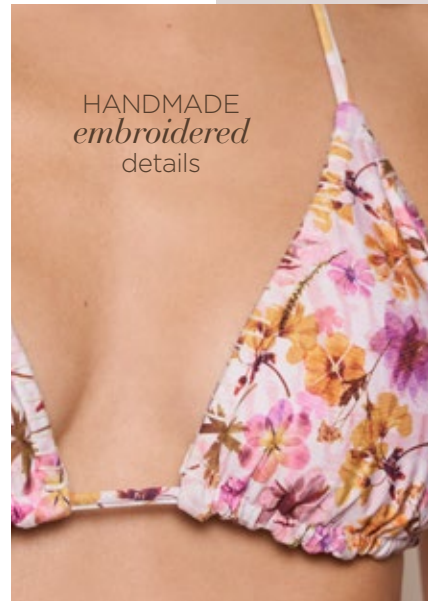


HANDMADE
beaded
details



HANDMADE
embroidered
details

REVERSIBLE



CL23205B
Reversible
Triangle Top.
Ecco Fabric.
505 - Orchid Smoke
S • M • L • XL

CL23206H
Reversible
Tie Side Bottom
(American Fit).
Ecco Fabric.
505 - Orchid Smoke
S • M • L • XL

CL23225H
Reversible
Tie Side Bottom
(Cheeky Fit).
Ecco Fabric.
505 - Orchid Smoke
S • M • L • XL

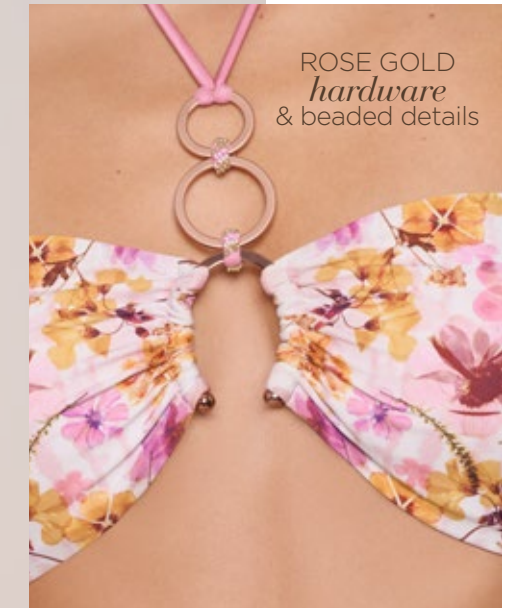


EMBROIDERY
in neckline and waist

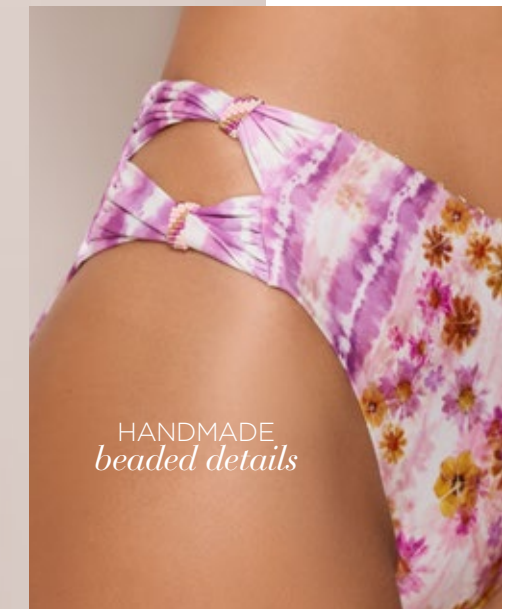


CL23214M
Plunge One Piece
(Moderate Fit).
Ecco Fabric.
505 - Orchid Smoke.
S • M • L • XL

1 TOP 2 WAYS



ROSE GOLD
hardware
& beaded details



HANDMADE
beaded details

CL23211B
Reversible
Bandeau Top.
Ecco Fabric.
505 - Orchid Smoke
S • M • L • XL

CL23210H
Hipster Bottom.
(American Fit).
Ecco Fabric.
505 - Orchid Smoke
S • M • L • XL



UNDERWIRE CUPS
with crochet embroidery
in neckline and bust

CL23204M
One Piece
With Back Lace - Up.
Ecco Fabric.
505 - Orchid Smoke
S • M • L • XL



THE RESORT WEAR
that you can wear
every day



CL23216C
Short Dress.
Holly Eco, Flat Woven Fabric.
505 - Orchid Smoke
S • M • L



CL23219B
 Bandeau Top.
 Removable Straps.
 Embroidered Fabric.
 104 - Coconut Milk
 S • M • L • XL

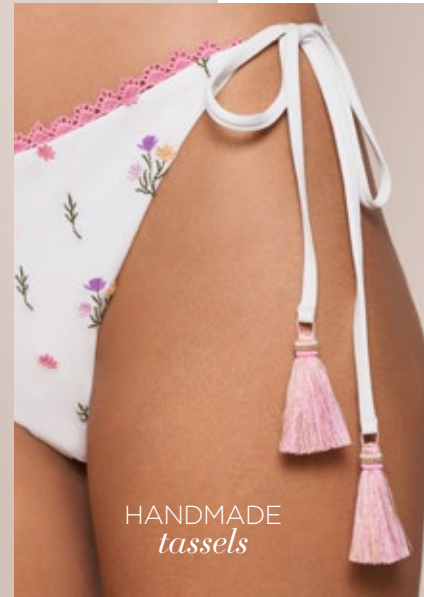
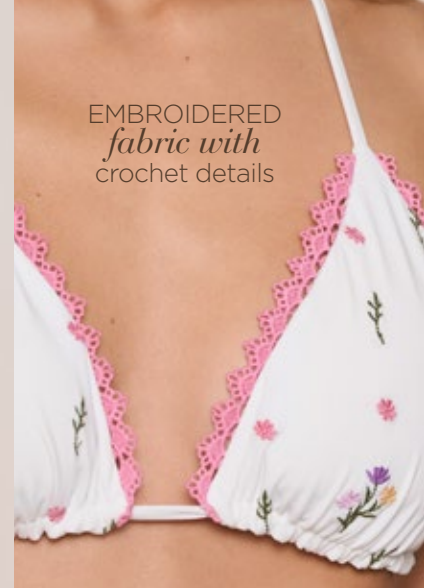
CL23220H
 String
 Bottom (Latin Fit).
 Embroidered Fabric.
 104 - Coconut Milk
 S • M • L • XL



CL23217B
 Triangle Top.
 Embroidered Fabric.
 104 - Coconut Milk
 S • M • L • XL

CL23218H
 Tie Side Bottom
 (American Fit).
 Embroidered Fabric.
 104 - Coconut Milk
 S • M • L • XL

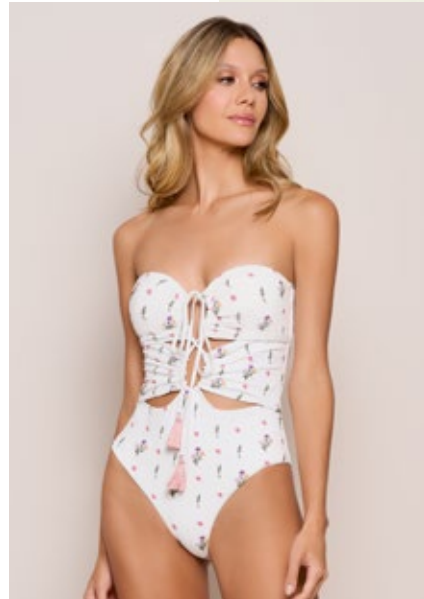
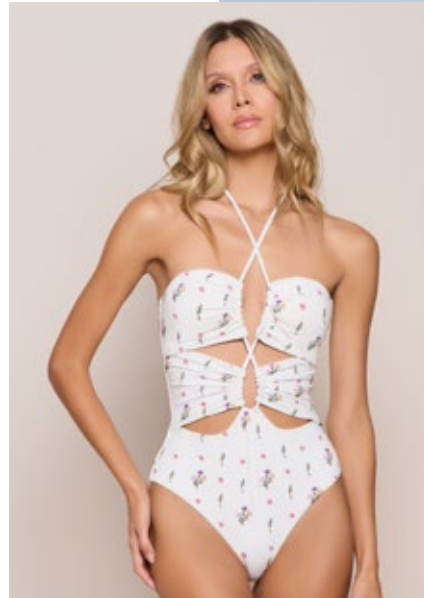
CL23226H
 Tie Side Bottom
 (Cheeky Fit).
 Embroidered Fabric.
 104 - Coconut Milk
 S • M • L • XL



EMBROIDERED
fabric with
 crochet details

HANDMADE
tassels

1 SUIT 3 WAYS



CL23221M / Strappy One Piece (Moderate Fit).
Embroidered Fabric. / 104 - Coconut Milk
S • M • L • XL



CL23222M
OTS One Piece
(Moderate Fit).
with Removable Belt.
Embroidered Fabric.
104 - Coconut Milk
S • M • L • XL



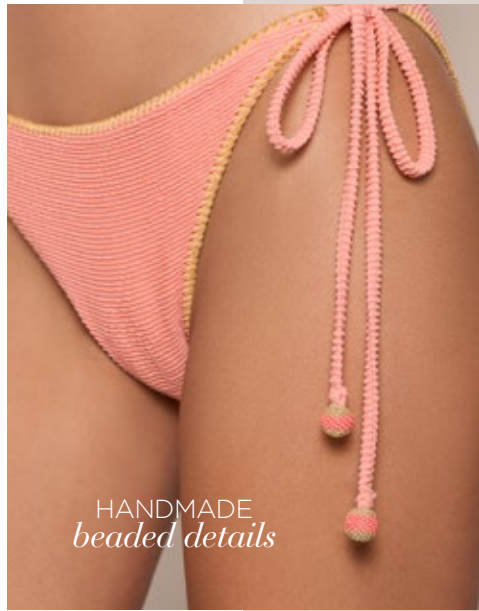
Sunset

As the sun begins to fade, we harness the properties of the sun's natural light and soft touch giving us *romantic and rejuvenating power.*





TEXTURED FABRIC
with gold handmade
crochet embroidery



HANDMADE
beaded details

CL23240B
Triangle Top.
Textured Fabric.
610 - Peach Pink
S • M • L • XL

CL23241H
Tie Side Bottom
(American Fit).
Textured Fabric.
610 - Peach Pink
S • M • L • XL

CL23265H
Tie Side Bottom
(Cheeky Fit).
Textured Fabric.
610 - Peach Pink
S • M • L • XL



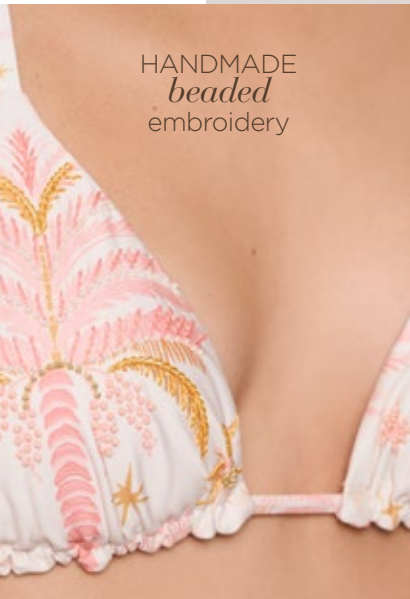


GOLD HAMMERED
hardware detail



CL23246M
Triangle One Piece
(Moderate Fit).
Textured Fabric.
610 - Peach Pink
S • M • L • XL





HANDMADE
beaded
embroidery



HANDMADE
tassels



CL23244B
Triangle Top.
Ecco Fabric.
610 - Peach Pink
S • M • L • XL

CL23245H
Tie Side Bottom
(American Fit).
Ecco Fabric.
610 - Peach Pink
S • M • L • XL

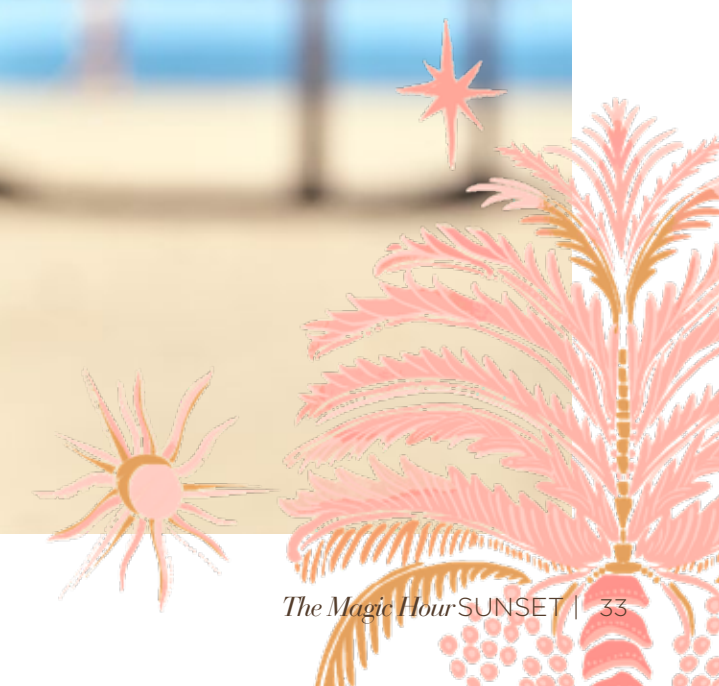
CL23266H
Tie Side Bottom
(Cheeky Fit).
Ecco Fabric.
610 - Peach Pink
S • M • L • XL



DEEP V NECKLINE
with handmade
embroidery in the waist

CL23273M
Lace Up One Piece
(Moderate Fit).
Ecco Fabric.
610 - Peach Pink
S • M • L • XL

CL23253M
High Neck One
Piece (Moderate Fit).
Adjustable Back.
Ecco Fabric.
610 - Peach Pink
S • M • L • XL





HANDMADE EMBROIDERY
and beaded rings

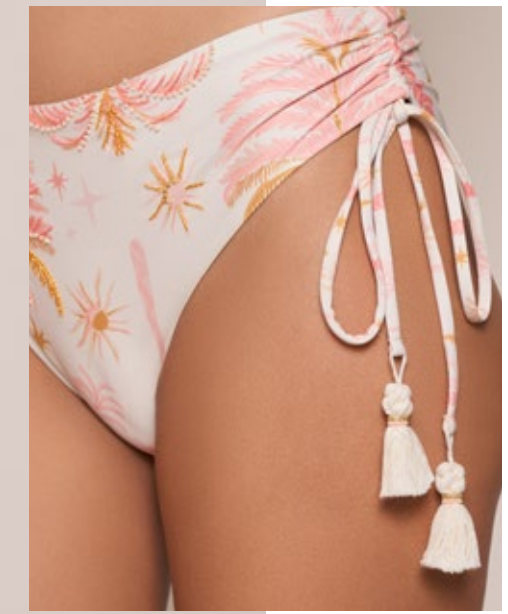
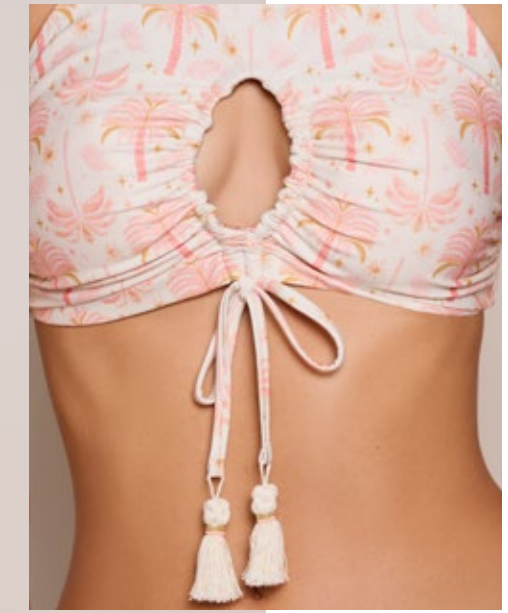


DOUBLE TIE SIDE
and handmade
tassels

CL23247B
Triangle Top. Ecco Fabric.
610 - Peach Pink
S • M • L • XL

CL23248H
Tie Side Bottom (Latin Fit).
Ecco Fabric. 610 - Peach Pink
S • M • L • XL

1 TOP 2 WAYS



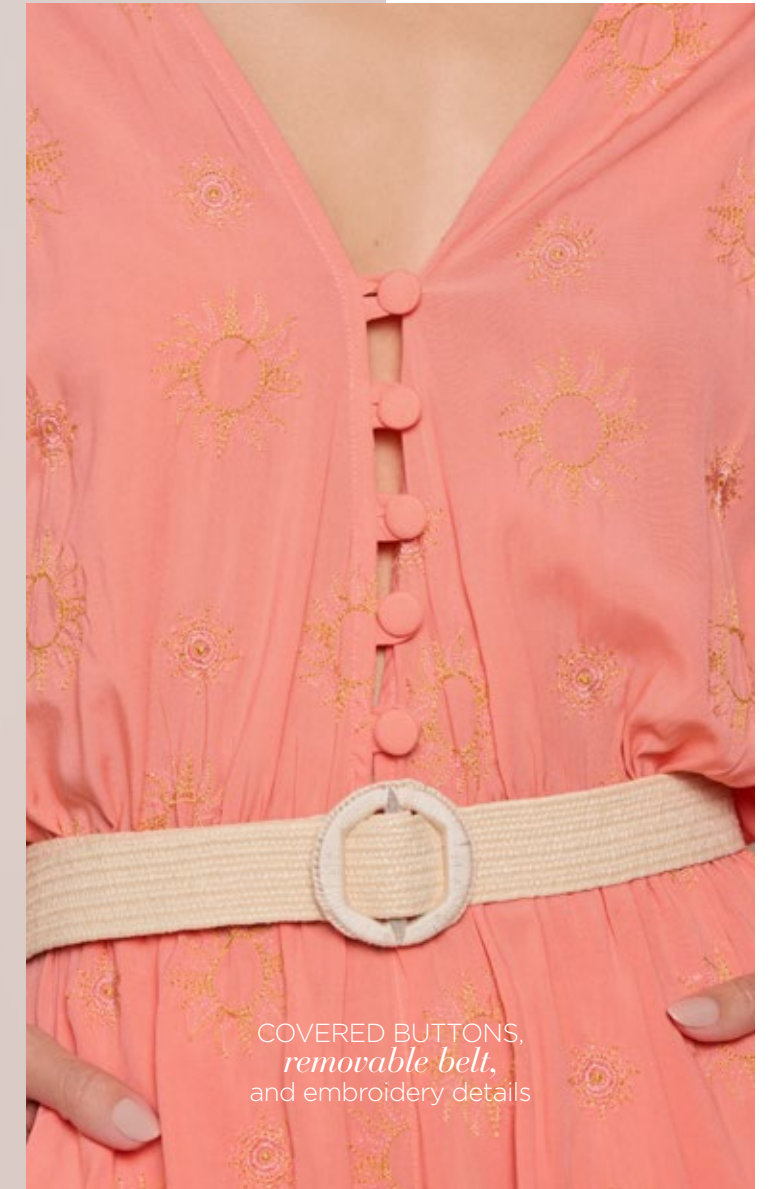
CL23249B
Reversible
High Neck Bra Top.
Ecco Fabric.
610 - Peach Pink
S • M • L • XL

CL23250H
Hipster
Tie Side Bottom
(American Fit).
Ecco Fabric.
610 - Peach Pink
S • M • L • XL



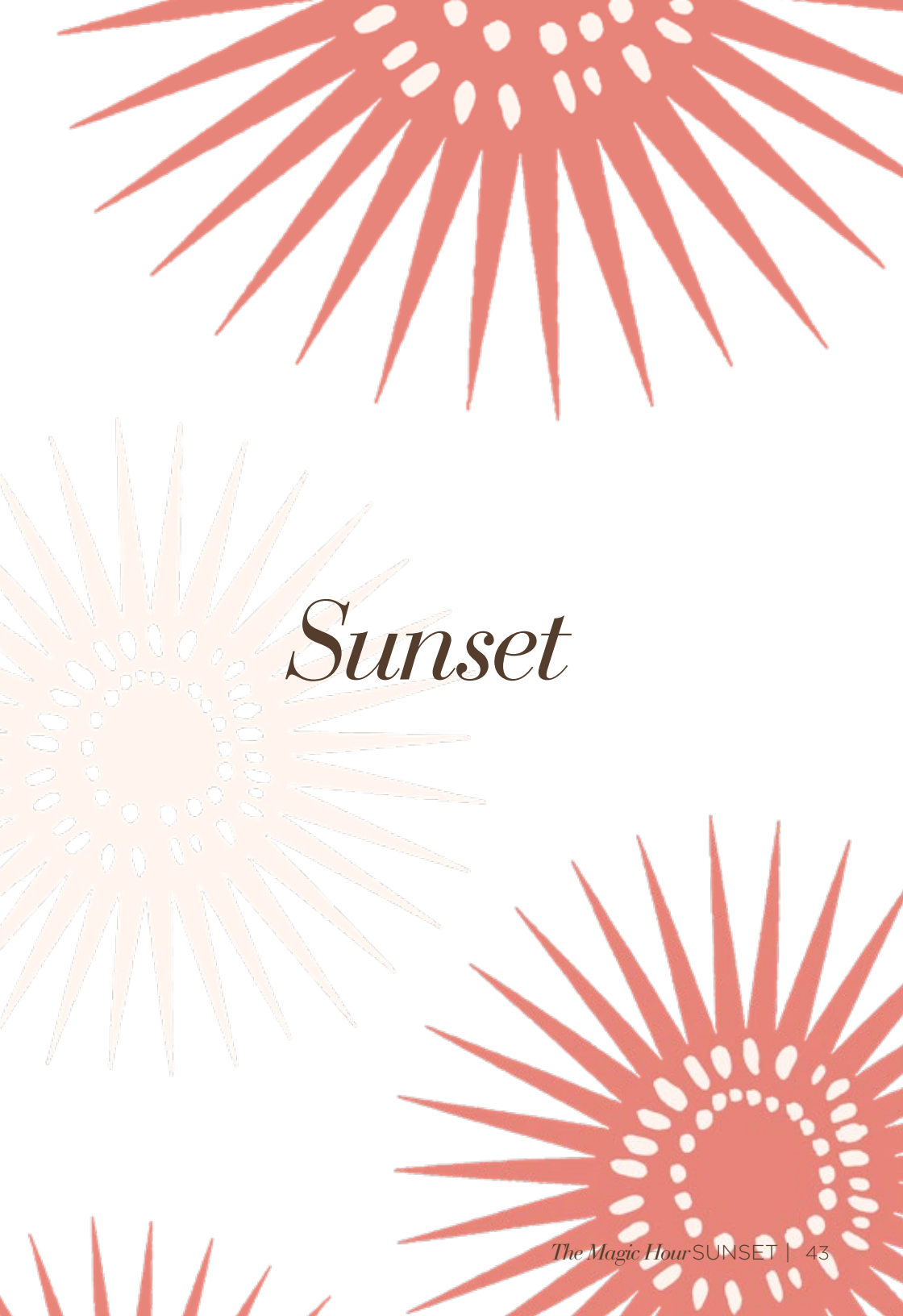
CL23254C
Short Kimono.
Holly Eco, Flat Woven Fabric.
610 - Peach Pink
S • M • L



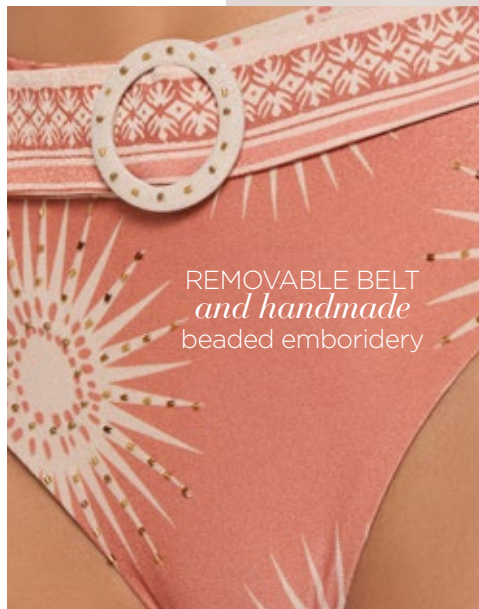
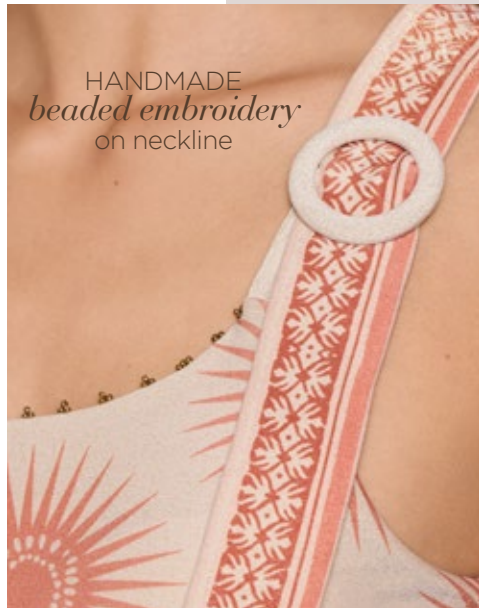


COVERED BUTTONS,
removable belt,
and embroidery details

CL23263C
Short Jumpsuit
with Removable Belt.
Embroidered Woven Fabric.
610 - Peach Pink
S • M • L



Sunset

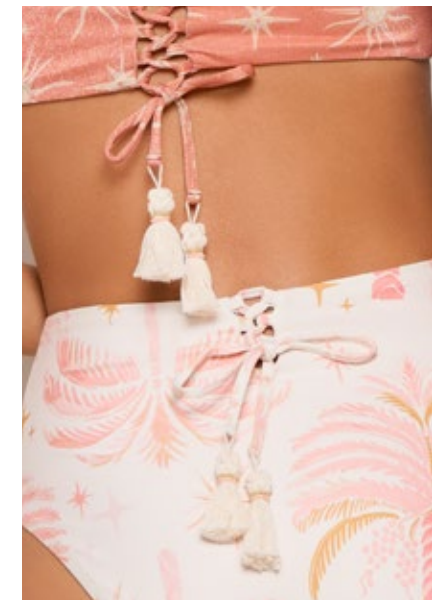
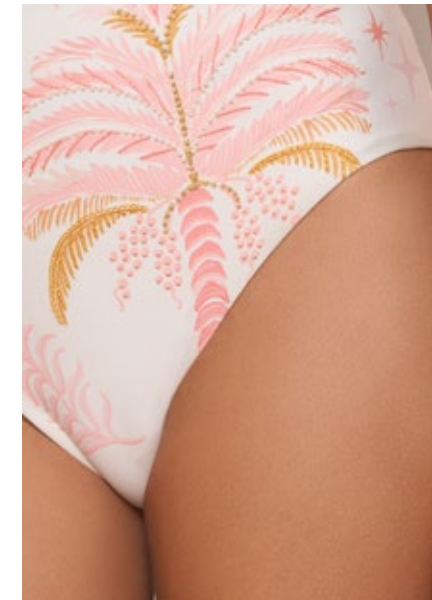


CL23259B
Asymmetrical One
Shoulder Bra Top.
Matte Luster Fabric.
203 - Canyon Sunset
S • M • L • XL

CL23260H
High Waisted Bottom
(Moderate Fit).
Matte Luster Fabric.
203 - Canyon Sunset
S • M • L • XL



1 TOP 2 WAYS



CL23251B
Reversible
Bandeau Top .
Ecco Fabric and
Matte Luster Fabric.
203 - Canyon Sunset
S • M • L • XL

CI23252H
High Waisted Bottom
(Moderate Fit).
Ecco Fabric.
203 - Canyon Sunset
S • M • L • XL



CL23257B
OTS Traingle Top.
Matte Luster Fabric.
203 - Canyon Sunset
S • M • L • XL

CL23258H
String Botton
(Latin Fit).
Matte Luster Fabric.
203 - Canyon Sunset
S • M • L • XL

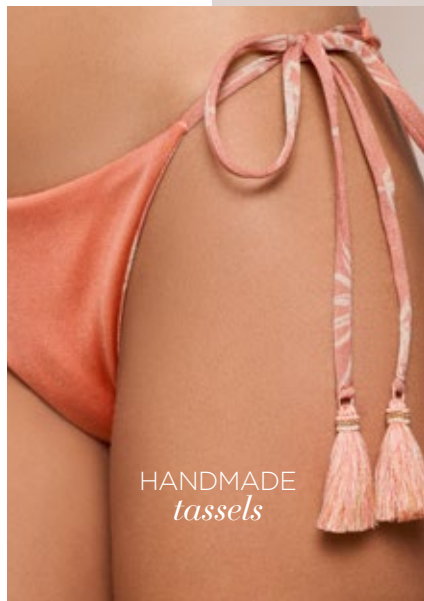


RIBBED
embroidery



HANDMADE
details

REVERSIBLE



CL23255B
Reversible
Triangle Top.
Matte Luster Fabric.
203 - Canyon Sunset
S • M • L • XL

CL23256H
Reversible
Tie Side Bottom
(American Fit).
Matte Luster Fabric.
203 - Canyon Sunset
S • M • L • XL

CL23267H
Reversible
Tie Side Bottom
(Cheeky Fit).
Matte Luster Fabric.
203 - Canyon Sunset
S • M • L • XL



CL23261M
Plunge One Piece
(Moderate Fit).
Matte Luster Fabric.
203 - Canyon Sunset
S • M • L • XL



DEEP V NECKLINE
with beaded embroidery
and handmade tassels



1 SUIT 3 WAYS



CL23262M
Strappy One Piece
(Moderate Fit).
Matte Luster Fabric.
203 - Canyon Sunset
S • M • L • XL



CL23264C
Long Dress.
Matte Luster Fabric.
203 - Canyon Sunset
S • M • L



FROM BEACH TO BAR
we have you covered



CL23215C
Short Dress.
Holly Eco, Flat Woven Fabric.
203 - Canyon Sunset
S • M • L



The Magic HOUR

www.cositalinda.com



cositalindabeachwear



cositalindabeachwear